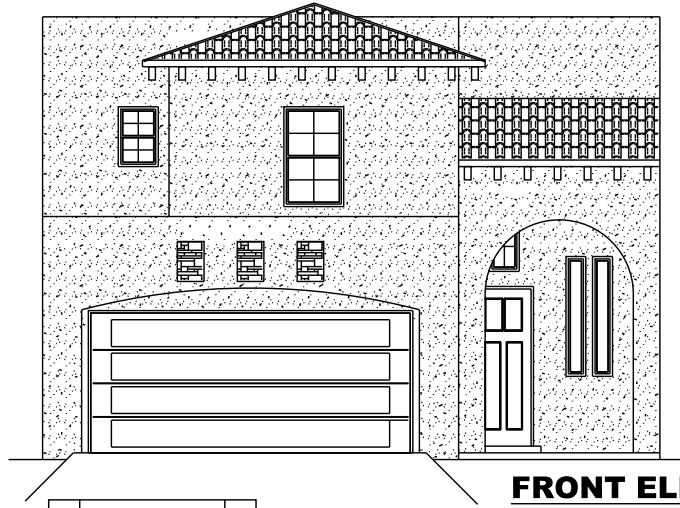


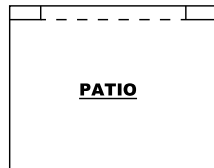


THE MAYAN PARK

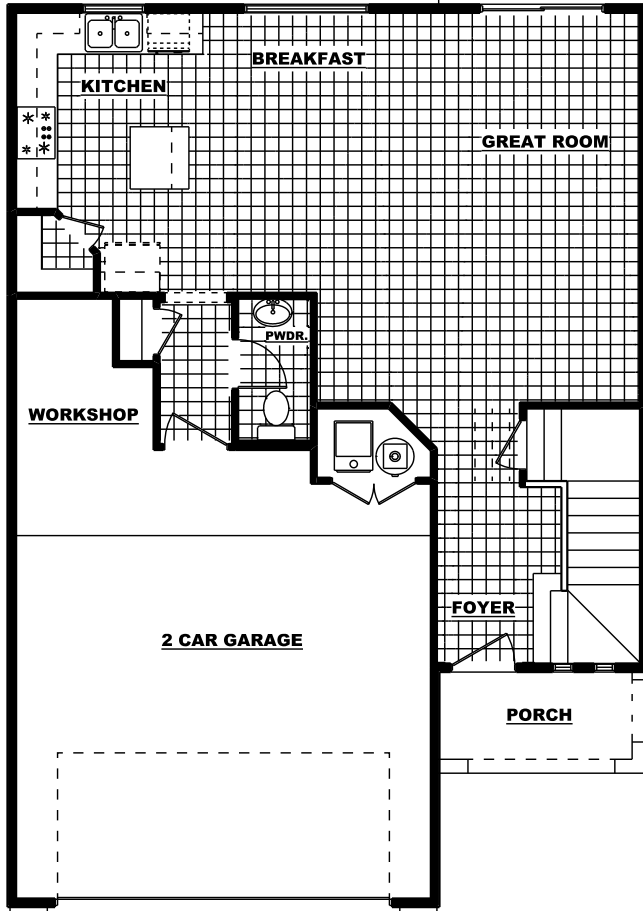
6016 Ginger Park St.



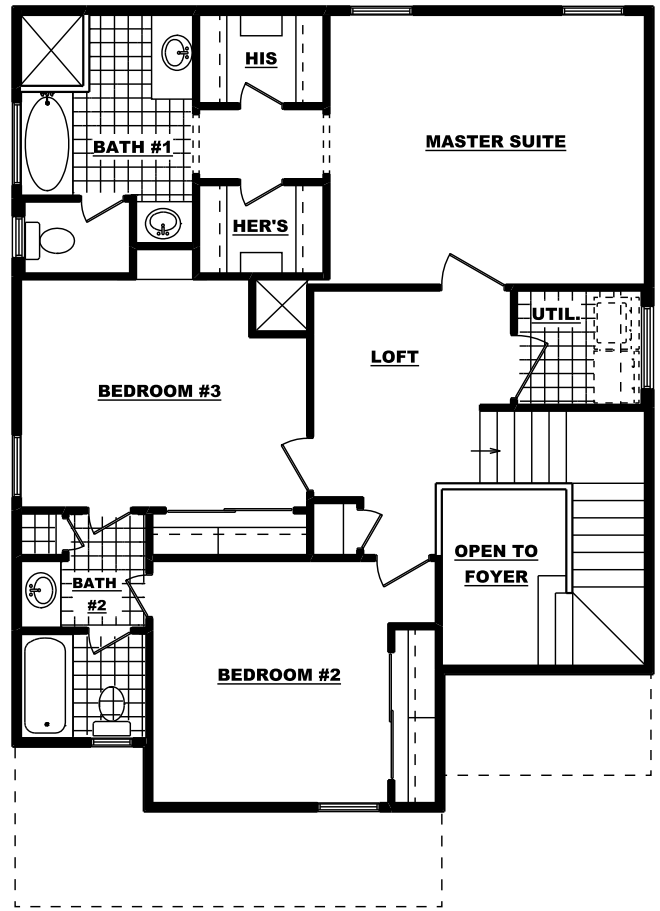
FRONT ELEVATION



PATIO



FIRST FLOOR PLAN



SECOND FLOOR PLAN

**1,733 Sq. Ft. - 3 Bedroom - 2.5 Bath - 2 Car Garage
W 30' -8" X D 43' - 3 1/2"**