

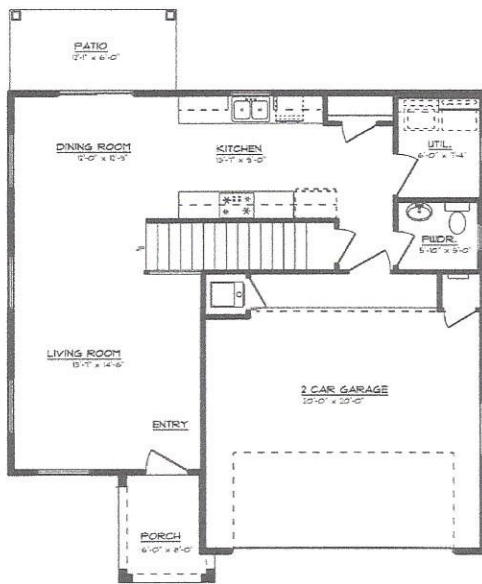
# ACCENT HOMES INC.

## THE AVILA II

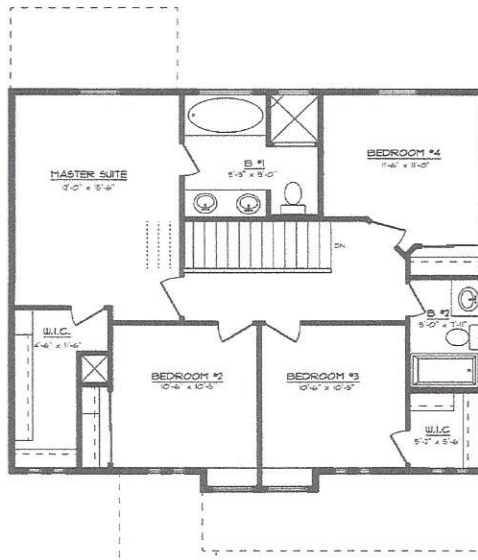
12346 Vesper Ct.

LIVING AREA 1630 SQ.FT.

- LIVING ROOM
- DINING
- KITCHEN
- UTIL. ROOM
- 4 BEDROOMS
- 2.5 BATHS
- BIG W.I.C.
- 2 CAR GARAGE



FIRST FLOOR PLAN  
34'-6" X 33'-8"



SECOND FLOOR PLAN

06/08/16