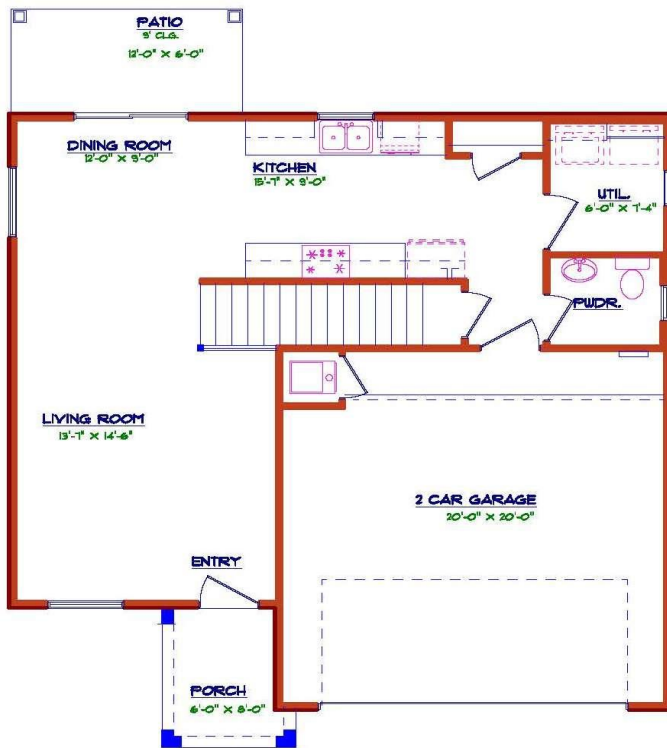
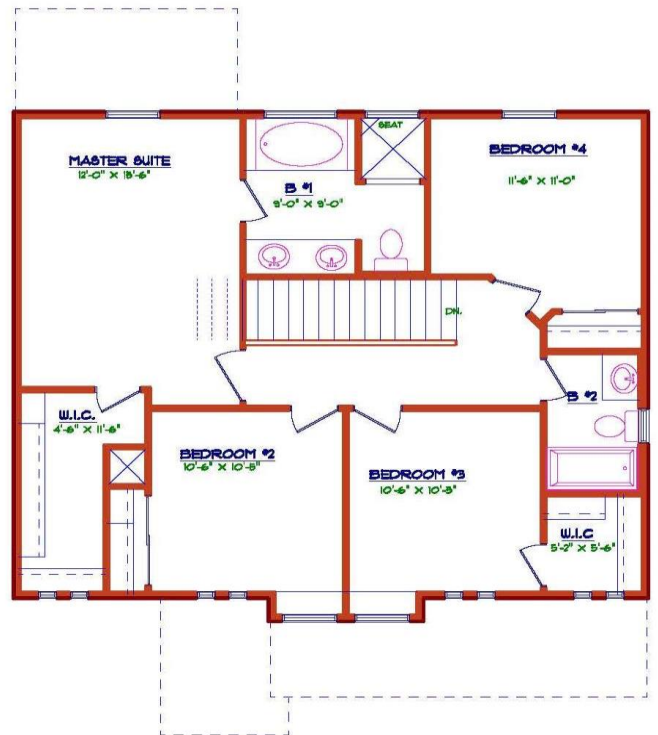


# AVILA II

## 904 Holly Park



**FIRST FLOOR PLAN**  
W 34'-6" X D 33'-8"



**SECOND FLOOR PLAN**

1,630 Sq. Ft.

4 Bedrooms

2.5 Bathrooms

2 Car Garage

Floor Plan, Amenities, Price and Availability are subject to change without notice