

THE AVILA II S

1630 SQFT. – 4 BEDROOMS – 2.5 BATHROOMS – 2 CAR GARAGE

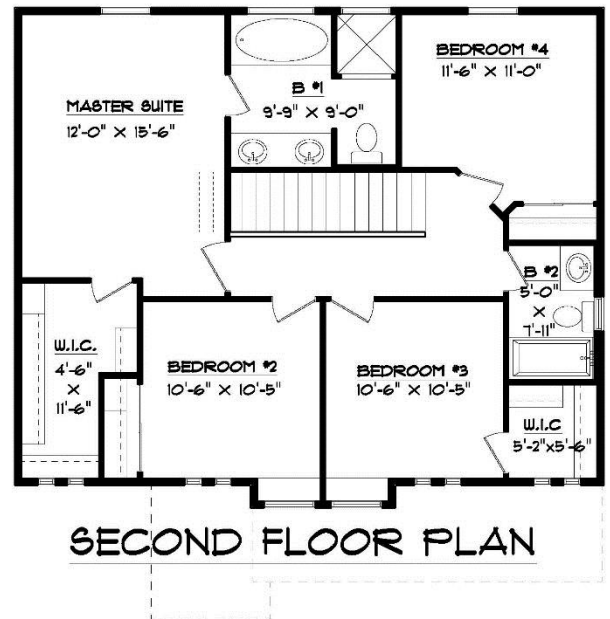
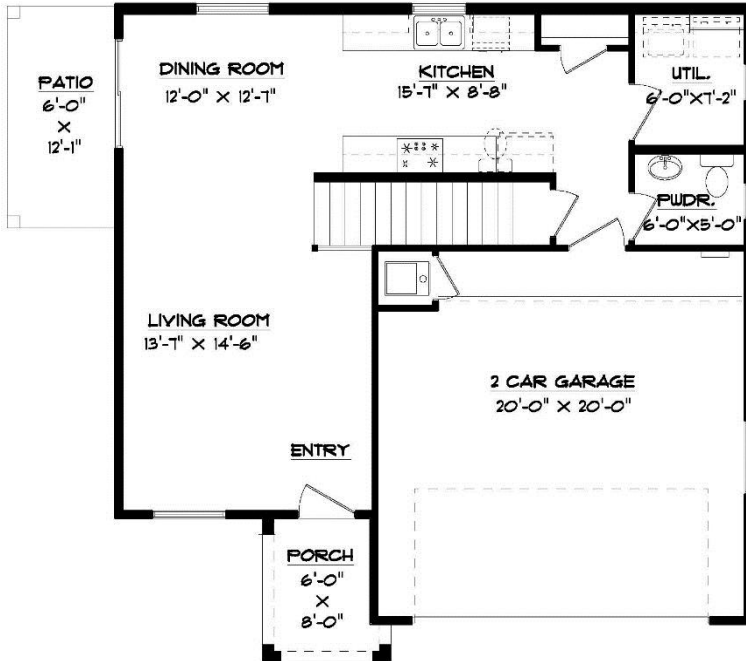


Build your dream home...



THE AVILA II S

1630 SQFT. – 4 BEDROOMS – 2.5 BATHROOMS – 2 CAR GARAGE



Floor Plan, Amenities, Price and Availability are subject to change without notice





Energy Star Certified EFFICIENCY, COMFORT AND HEALTH



ALL ACCENT HOMES ARE DESIGNED AND BUILT WITH HIGH LEVELS OF ENERGY EFFICIENCY TO MEET AND EXCEED ENERGY STAR PROGRAM STANDARDS.

We not only build your dream home...
we build a cost-effective, healthy home
suited for any climate and the comfort
for you and your loved ones...

Jack Winton



*WE GUARRANTY HEATING & COOLING PERFORMANCE OF EACH HOME